

BATCH MIXER FOR BULK PRODUCTS



R1-BSK
with gear motor



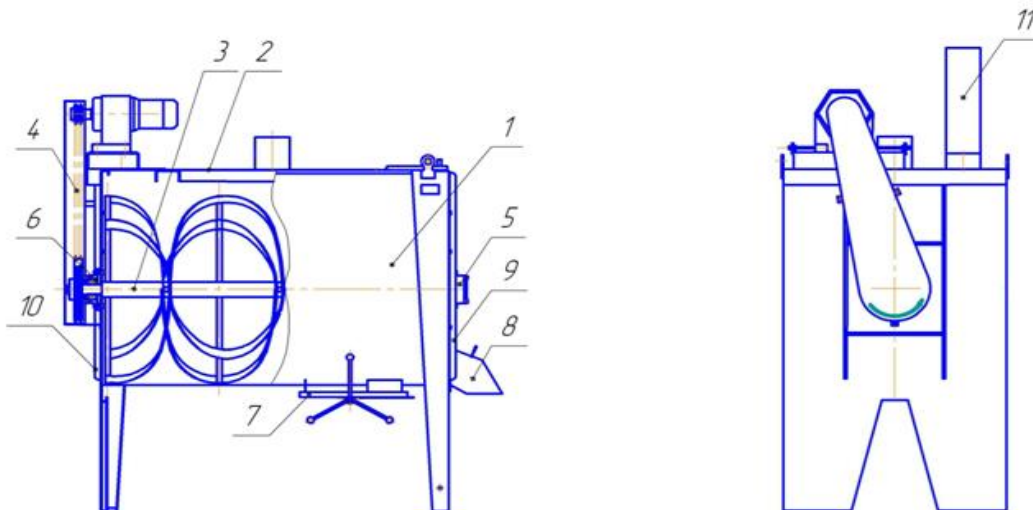
R1-BSK-M
with chain transmission

Mixer R1-BSK and R1-BSK-M are designed for mixing bulk products (animal feed different sorts of flour, etc).

Products for mixing (with moisture not exceeding 15%) are fed to the mixer.

Efficiency of mixing 95-97%.

The mixer consists of a hull (1), a cover (2), with an inlet welded to it, a gear motor; screw conveyor (3), chain transmission (4), bearing units (5,6), gates (7), a dispatch outlet to the bag (8), side panels (9,10), aspiration duct (11). The mixing time of the feed is set on the timer at the console.



TECHNICAL CHARACTERISTICS

Capacity	2-5 t/h
Total volume capacity	2,2 m ³
Net volume capacity (operational volume)	1,4 m³
Installed power	7,5 kWt
Total batch duration including:	8-10 min
Loading	1,5 min
Mixing	5-7 min
Discharge	1,5 min
Screw conveyor speed	20 rotations per min (max)
Overall dimensions:	
Length	2530 mm
Width	1300 mm
Height	2800 mm
Mass	480 kg

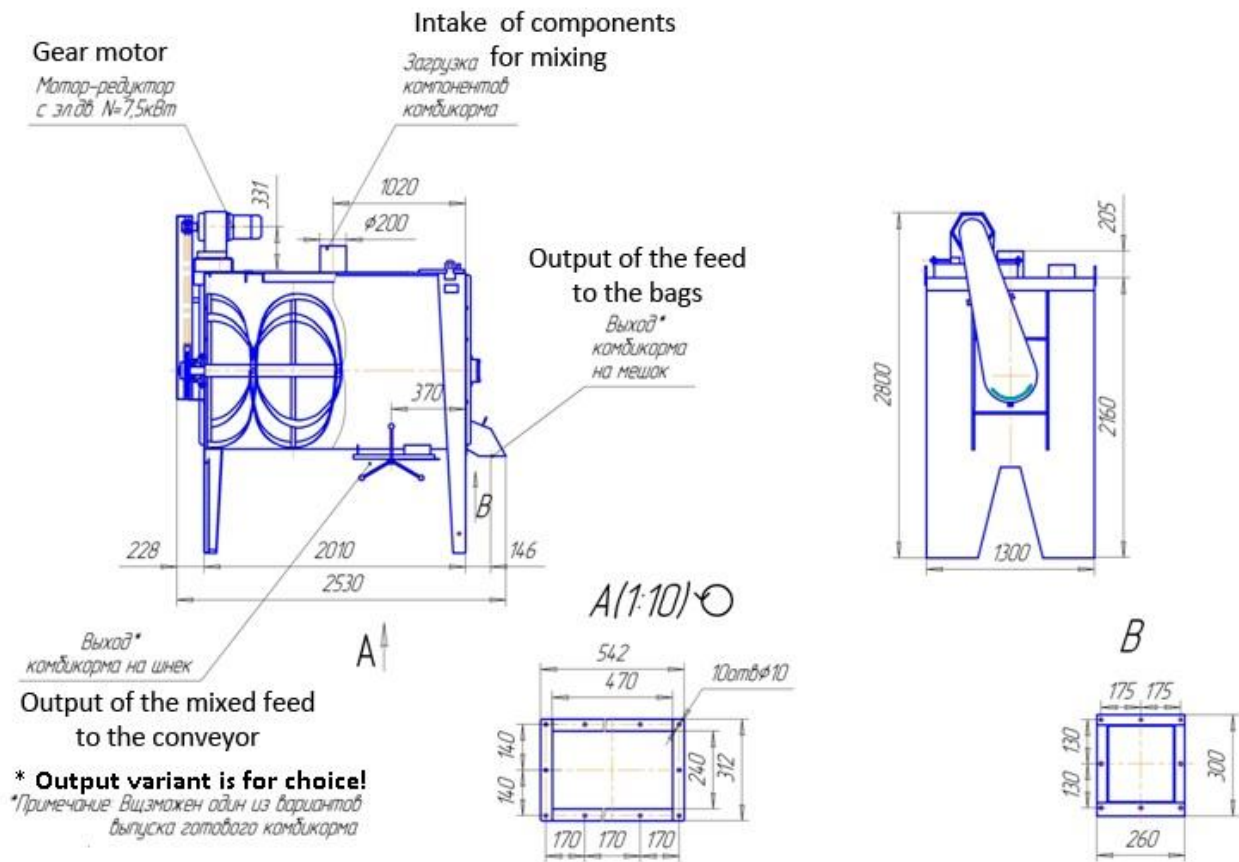


Рисунок 2 - Габаритные, установочные и присоединительные размеры смесителя P1-БСК.
 Overall, installation and attachment dimensions of the mixer

The mixed feed can be dispatched from the mixer in bulk to the conveyor and to the bags. According to the customer's demand the model can be modified for only one type of dispatch.

ANIMAL FEED BATCH MIXER

R1-BSK-2



Mixer R1-BSK-2 is designed for animal feed mixing.

TECHNICAL CHARACTERISTICS

Volume capacity	3 m ³ (3000 liters)
Installed power	22 kWt
Total batch duration including:	5-7 min
Loading	5-10* sec
Mixing	4-6 min
Discharge	10-30* sec
Screw conveyor speed	46 rotations per min (max)
Overall dimensions:	
Length	3650 mm
Width	1450 mm
Height	1710 mm
Mass	3042 kg

* depending on the type of raw products

Design & operation

Mixer (Fig.1) consists of a body (1); shaft with blades (2); bearing units (3, 5); discharge hatch (4); inspection hatch (6); rear wall (7); support bracket (8).

The gear motor is used to drive the mixer screw.

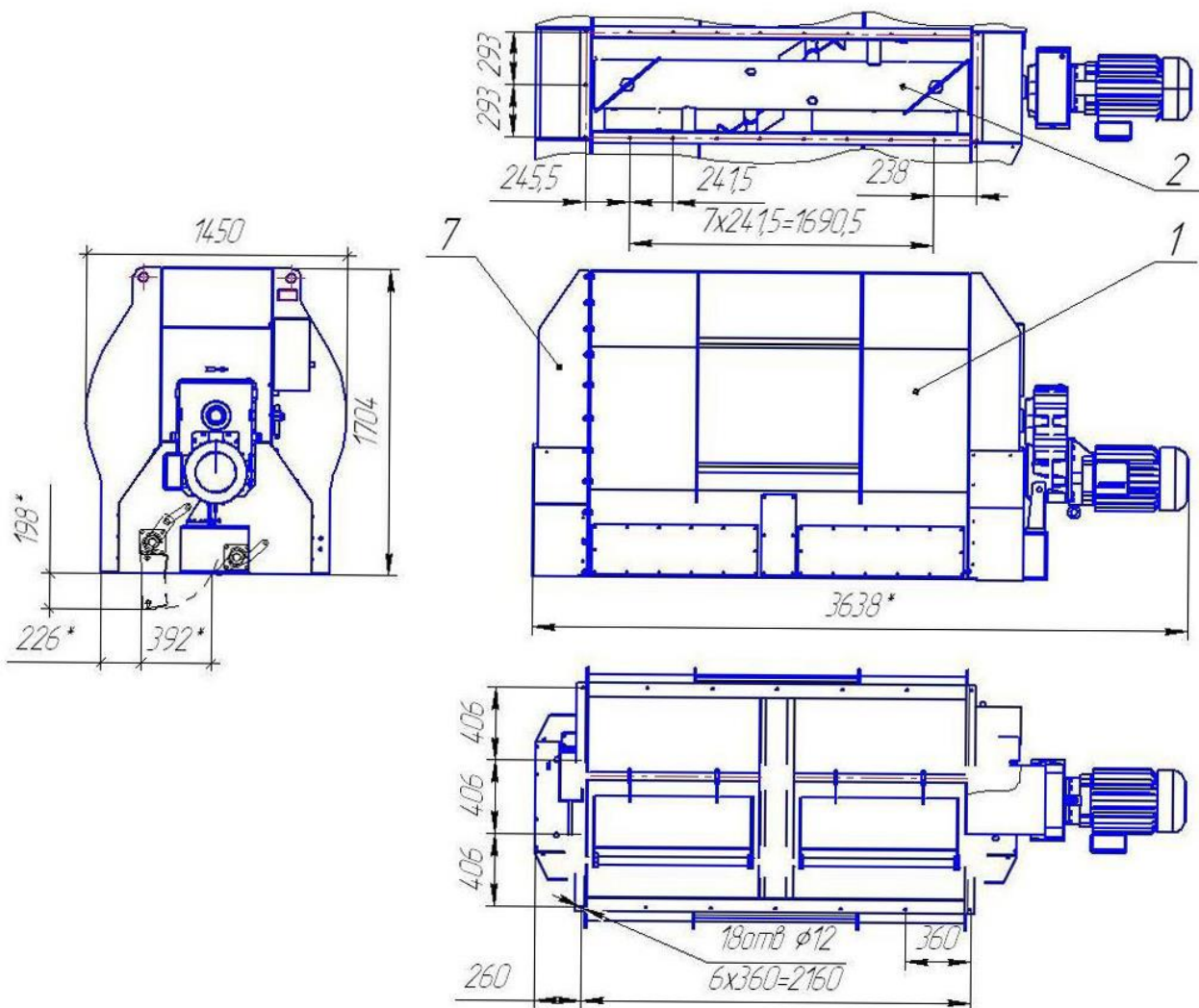
The mixer shaft is hollow and the gear motor is mounted directly on the shaft, the number of revolutions of the output shaft of the gear motor is 46 rpm. motor Power 22 kW.

The mixer shaft is an axis with four blades arranged in a helical spiral. The shaft is fixed in bearings.

The body and the end walls of the mixer are made of steel sheet and are bolted together.

The unloading hatch is designed for discharge of the mixed feed; the hatch is being opened by means of a pneumatic drive.

Overall, installation and connection dimensions of the mixer R1-BSK-2 are shown in figure 1.



95 Internatsionalnaya street, Nizhny Novgorod, 603950 Box 1156, Russia
Telephone: +7 (831) 246-09-32, www.melinvest.ru E-mail: info@melinvest.ru

