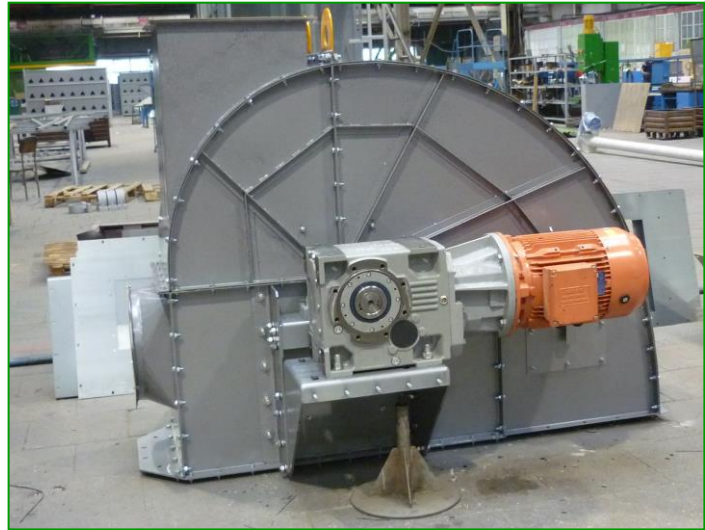


## BUCKET ELEVATORS



Bucket Elevators are used for vertical transportation of grain

- Maximum height – 65 meters
- Capacity – from 5 t/h up to 250 t/h



Include:

- polymeric buckets;
  - speed limit switch, misalignment limit switch;
  - anti-friction nylon lining for boot and head,
  - explosion reliefs, inspection door, control unit with indicators and sensors
  - belts made of materials resistant to flammability and friction;
- Gear motor manufacturer- MOTOVARIO (ITALY)



### TECHNICAL DATA

<b>NM 5 – NM 50 BUCKET ELEVATORS</b>						
Capacity, t/h	5	10	20	30	40	50
Installed power, kWt/h	2.2	2.2	4	4	4	5.5
<b>NM 100 BUCKET ELEVATORS</b>						
Capacity, t/h	100 h 10-15 m	100 h 16-30 m	100 h 31-45 m	100 h 46-60 m		
Installed power, kWt/h	7.5	11	22	30		
<b>NM 175 BUCKET ELEVATORS</b>						
Capacity, t/h	175 h 11-25 m	175 h 16-30 m	175 h 36-50 m	175 h 51-60 m		
Installed power, kWt/h	22	30	37	45		

#### **Bucket elevators NM 5÷50 t/h**

Belt has 3 layers

Casing form: tetrahedral

Belt speed 5÷40 t/h 2, 6 m/s

50 t/h 3,1-3,3 m/s

Metal thickness: bucket elevator casing- thickness 2 mm; head-3 mm; boot -3 mm

#### **Bucket elevators NM 100 t/h**

Belt has 6 layers

Casing form: tetrahedral

Metal thickness: bucket elevator casing- thickness 2 mm; head-3 mm; boot -3 mm

#### **Bucket elevators NM 175 t/h**

Belt has 8 layers

Casing form: octahedral

Metal thickness: bucket elevator casing- thickness 2 mm; head-3 mm; boot -4 mm